

THE JUNIPER

OVERVIEW



STORIES

2

SQ FT

1620

BEDS

3

BATH

2.5

ABOUT THIS FLOORPLAN

A thoughtfully designed two-story home that blends functionality with a strong sense of connection. The main level is centered on open, shared spaces, featuring a spacious kitchen and a welcoming living area, enhanced by a soaring two-story ceiling and an interior overlook from above. Upstairs, all bedrooms are privately situated, offering a quiet retreat while maintaining a visual connection to the heart of the home below.

EST



2025

WILDFLOWER

618-692-9502

wildflower.homes

hello@wildflower.homes

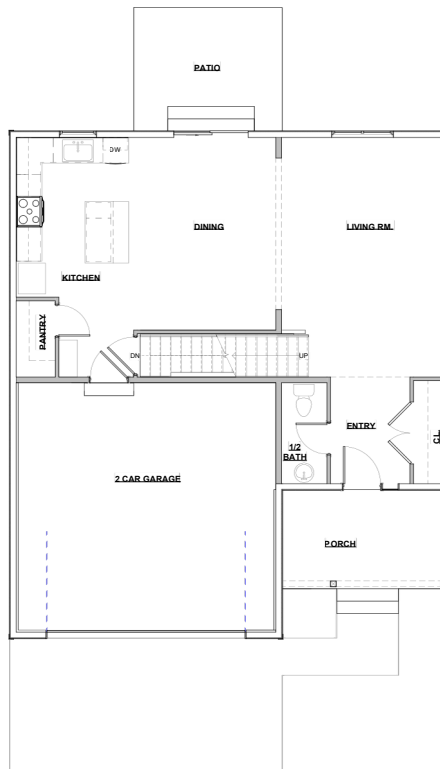
THE JUNIPER

FLOORPLANS

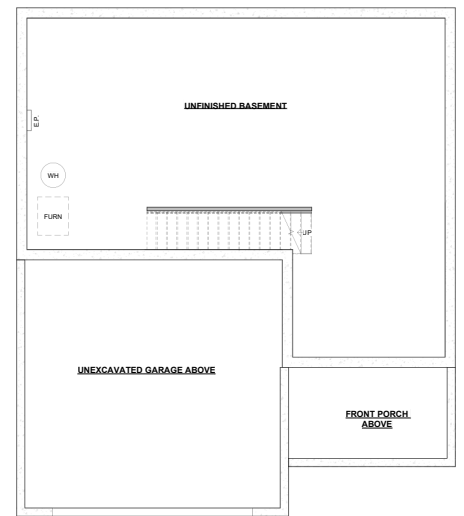
2ND FLOOR



MAIN FLOOR



OPTIONAL



AVAILABLE BASEMENT OPTIONS:

- FULLY FINISHED
- PARTIALLY FINISHED
- CRAWL SPACE
- SLAB

EST



2025

WILDFLOWER

618-692-9502

wildflower.homes

hello@wildflower.homes